

Solar Charge Controller

with built in LED Driver



LS-BPL series combines solar charge controller and LED driver into one unit. It is ideal for solar LED Lighting requiring dimmer function. The control parameter can be programmed by Mobile APP ,SPP-02 and PC software.

Models :

- LS102460BPL 10A 12/24V auto work
- LS2024100BPL 20A 12/24V auto work

Features:

- PWM charging
- Battery type selection: Sealed, Gel, Flooded and User(programmable).
- Flexible dimming function(0-100%)
- Battery temperature compensation



- Digital precision constant current control
- Maximum output efficiency of 96.7%
- Output current adjustable
- Parameter programmable via Mobile APP, PC software
- RS485 port with industrial standard MODBUS open architecture
- Aluminum housing for better cooling
- Fully encapsulated PCB, IP67 protection



Load working mode:

- Manual control
- Light ON/OFF (Default)
- Light ON+ Timer
- Time Control

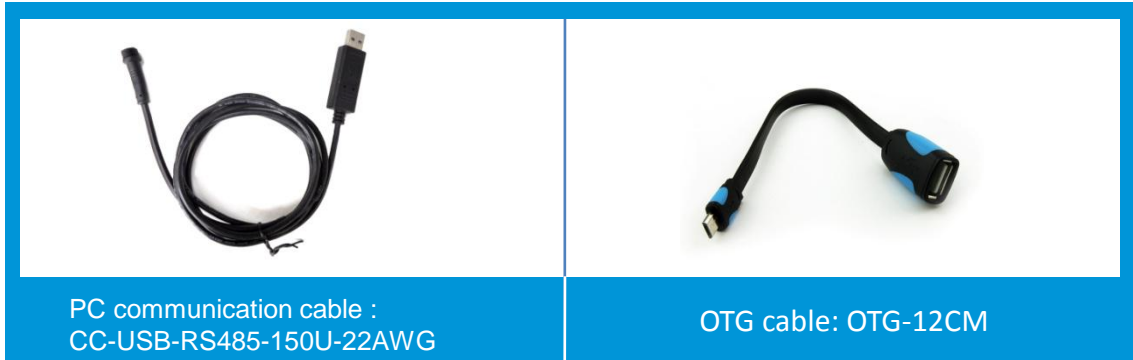
Electronic protections:

- PV short circuit protection
- PV reverse polarity protection
- Battery over voltage protection
- Battery over discharge protection
- Battery reverse polarity protection
- Battery overheating protection
- Load overload protection
- Load short circuit protection
- Controller overheating protection





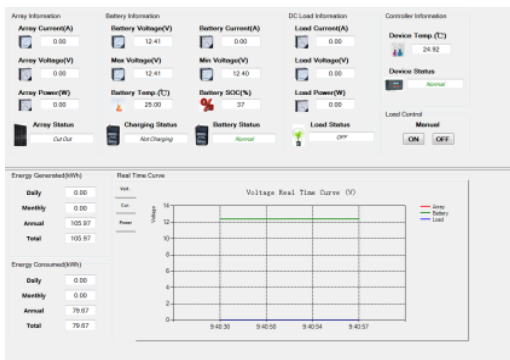
Optional accessories :



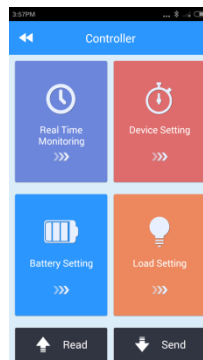
PC communication cable :
CC-USB-RS485-150U-22AWG

OTG cable: OTG-12CM

PC software:



Mobile APP :



* Free download from website for PC software and APP.

Technical specifications

Model	LS102460BPL	LS2024100BPL
Nominal system voltage	12/24V DC auto work	
Rated charge current	10A	20A
Max. output power	30W/12V, 60W/24V	50W/12V, 100W/24V
Max. output current	2.0A (default 0.35A)	3.3A (default 0.35A)
Output voltage range	Max. battery voltage+2V~60V	
Max. PV open circuit voltage	50V	
Load open circuit voltage	60V	
Equalize charging voltage*	Sealed: 14.6V, Flooded: 14.8V, User: 9~17V	
Boost charging voltage*	Gel: 14.2V, Sealed: 14.4V, Flooded: 14.6V, User: 9~17V	
Float charging voltage *	Gel /Sealed /Flooded: 13.8V, User: 9~17V	
Low voltage reconnect voltage*	Gel /Sealed /Flooded: 12.6V, User: 9~17V	
Low voltage disconnect voltage*	Gel /Sealed /Flooded: 11.1V, User: 9~17V	
Output current control accuracy	≤30mA	
Max. output efficiency	96.7%	
Self-consumption	≤11mA(12V); ≤9mA(24V)	
Temp. compensation coefficient	-3mV/°C/2V	
Grounding	Common Positive	
Overall dimension	107x73x20mm	108.5x102x25.6mm
Power cable	PV/BAT: 14AWG(2.5mm ²) LOAD: 18AWG(1.0mm ²)	PV/BAT:12AWG(4.0mm ²) LOAD: 18AWG(1.0mm ²)
Net weight	0.28kg	0.46kg
Enclosure	IP67	
Working environment temperature	-35°C ~ +55°C	

* Technical data for 12V system at 25°C, twice in 24V system.

* Programmable voltage value by PC, MT50 and APP.



BEIJING EPSOLAR TECHNOLOGY CO.,LTD.
Add: BLDG #18, CO.PARK ,NO.8 HEYING
ROAD,CHANGPING DISTRICT, BEIJING,
CHINA

Tel: 86-10-82894962 / 82894112

Fax: 86-10-82894882

E-mail: info@epsolarpv.com